



VERDERFLEX®

VERDERFLEX OEM

Any questions? You may still have questions and/or comments after reading this brochure. Please feel free to contact us on +44 (0)1924 221 020 You can also respond via email to info@verderflex.com. For more information about Verderflex please visit our website www.verderflex.com

S40 Three Roller Pumps

VERDERFLEX®



VERDERFLEX
 Unit 3, California Drive, **TEL** +44 (0)1924 221 020
 Castleford WF10 5QH **FAX** +44 (0)113 222 0291
 United Kingdom **MAIL** info@verderflex.com
WEB www.verderflex.com

AT Wien **BE** Aartselaar **BG** Sofia **CH** Basel **CN** Shanghai **CZ** Praha **DE**
 Haan **FR** Eragny s/Oise **GB** Castleford **HU** Budapest **IT** Torre Boldone
JP Tokyo **NL** Groningen/Vleuten **PL** Katowice **RO** Bucuresti/Sibiu
RU St Petersburg **SK** Bratislava **US** Newtown/Macon **ZA** Northriding

S403.EN.0211

VERDER
 passion for pumps

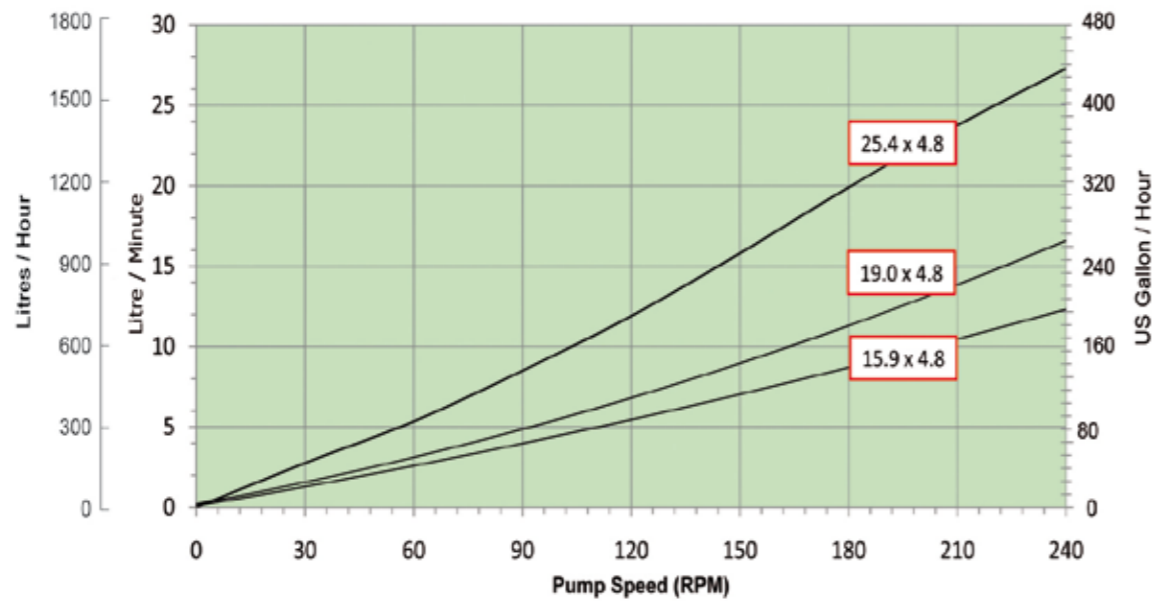
S40 - 3 roller

The S40 pump head design features a quick tube change, ergonomic design for ease of use and accepts three standard tube sizes.

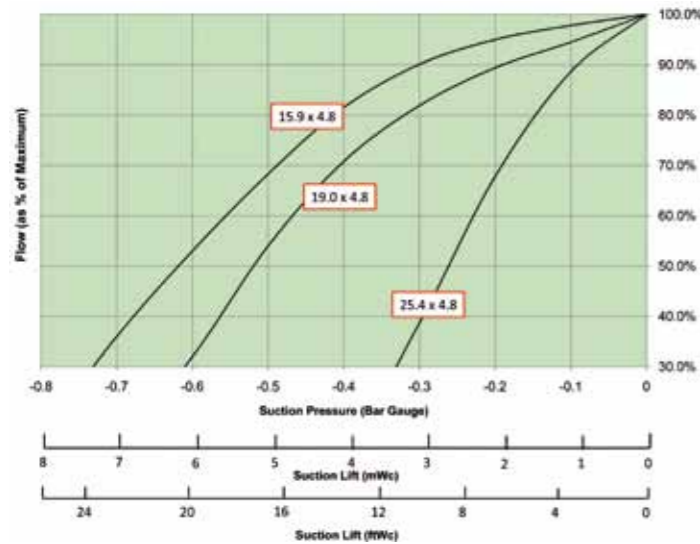


- Flow rates up to 27 l/min (428 US GPH)
- Pressures up to 2.0 Bar (29 PSI)
- Typically used in:
 - Chemical dosing,
 - Industrial fluid transfer,
 - Heavy duty environments

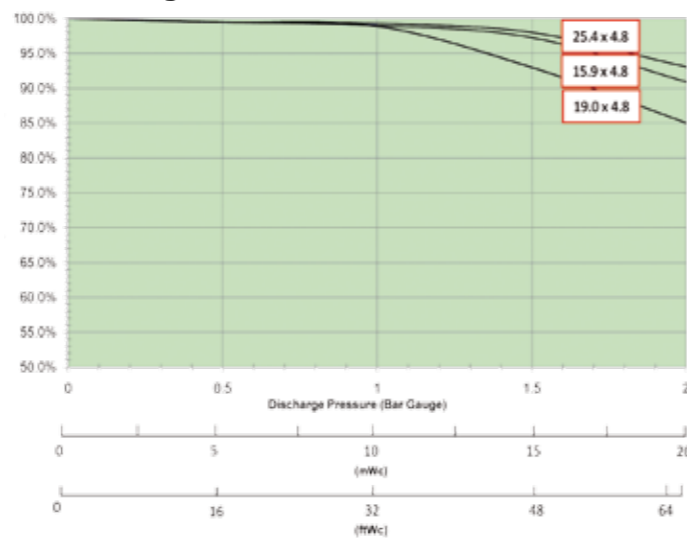
S40 - 3 Roller Free Flow Curve



Suction



Discharge



Flow rates with water at 20 °C (68 °F)

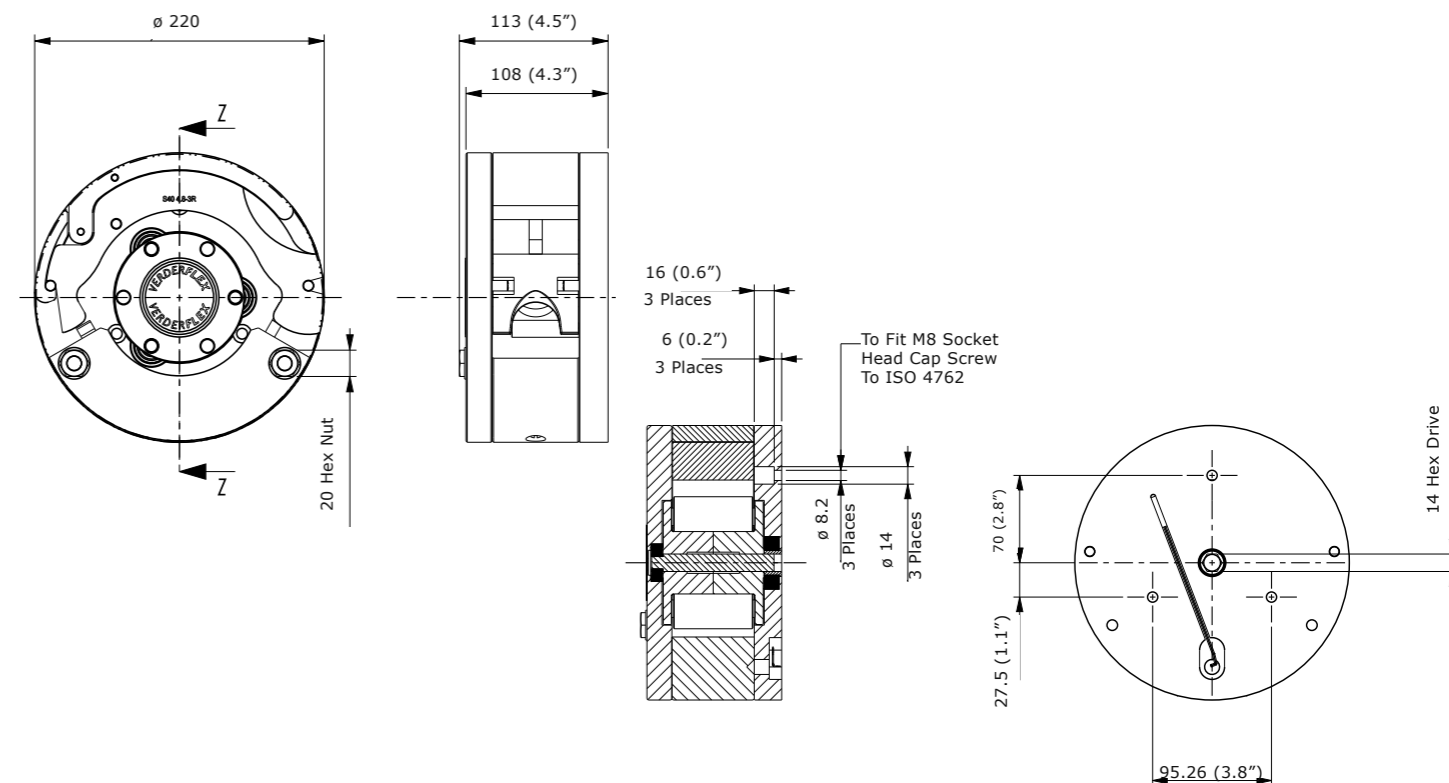
Technical Overview

Pump Specifications	
Easy-fit tube saddle for rapid tube changes	BS EN 1474 6082 TF Aluminium Alloy construction
Fits a range of tube sizes and materials	Stainless Steel rotor shaft
Simple adjustable tube clamping system	Polyoxymethylene (POM) clamp-base
Fits a variety of pump enclosures	Polymethylmethacrylate (PMMA) clear cover
Multi-channel capability	316 Stainless Steel Rollers
Working Temperature	5 - 45°C or 41 - 113°F (T _A = +20°C or 68°F)
Tube	Verderprene and Silicone
Tube Sizes	15.9 x 4.8mm, 19.0 x 4.8mm, 25.4 x 4.8mm

Tube Size Options

Tube (ID x WT)	60 RPM	120 RPM	180 RPM	240 RPM
15.9 x 4.8 mm (5/8" x 3/16")	2.5 l/min	5.5	8.5	12.2
	150 l/hr	330	510	732
	39.6 GPH	87.2	134.7	193.4
19.0 x 4.8 mm (3/4" x 3/16")	2.8 l/min	7.2	12.0	16.5
	168 l/hr	432	720	990
	44.4 GPH	114.1	190.2	261.5
25.4 x 4.8 mm (1" x 3/16")	5.5 l/min	12.5	20.0	27.0
	330 l/hr	750	1,200	1,620
	87.2 GPH	198.2	317.0	428.0

General Arrangement Drawing and Mounting Positions



All dimensions in millimetres and inches